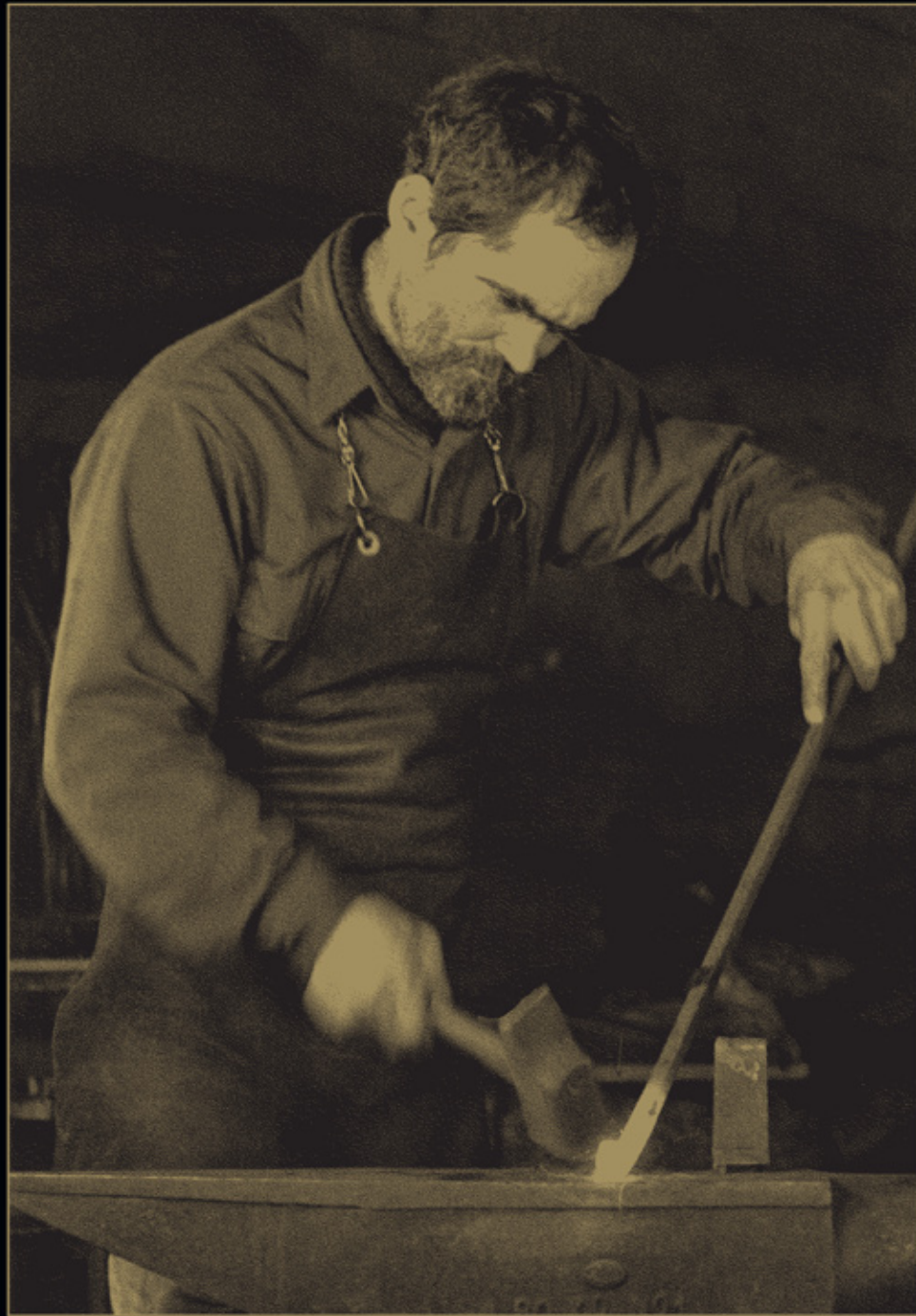


# *Gaby's Shoppe*

*Fine Wrought Iron*



*We thank you for your interest in our company.*

*The following pages represent our extensive line of fine wrought iron drapery hardware. The finish used for this catalog is Antique Bronze. Please note that all of our products can be ordered in the finish of your choice. Antique Bronze and Brushed Bronze (Antique Bronze without the green) are two of our most popular finish options.*

*All orders are manufactured and finished right here in the United States. Because we are a true manufacturer and not merely a distributor of products made entirely overseas - your order can be customized to meet specific needs. Hand crafted items such as custom bracket solutions, arches, and bay windows are a specialty.*

## TABLE OF CONTENTS

### *Rod, Ring, and Finial Options*

<i>3/8" Rods and Rings</i> .....	<i>page 1</i>
<i>3/8" Finial options</i> .....	<i>pages 1 &amp; 2</i>
<i>5/8" Rods and Rings</i> .....	<i>page 3</i>
<i>5/8" Finial options</i> .....	<i>pages 3 to 6</i>
<i>3/4" Rods and Rings</i> .....	<i>page 7</i>
<i>3/4" Finial options</i> .....	<i>pages 7 to 12</i>
<i>1" Rods and Rings</i> .....	<i>page 13</i>
<i>1" Finial options</i> .....	<i>pages 14 to 20</i>
<i>1 1/4" and 1 3/8" Rods and Rings</i> .....	<i>page 21</i>
<i>1 1/4" &amp; 1 3/8" Finial options</i> .....	<i>pages 21 to 28</i>
<i>1 1/2", 1 5/8", &amp; 1 3/4" Rods and Rings</i> .....	<i>page 29</i>
<i>1 1/2", 1 5/8", &amp; 1 3/4" Finial options</i> .....	<i>pages 30 to 34</i>
<i>2", 2 1/4", and 2 1/2" Rods and Rings</i> .....	<i>pages 35 &amp; 36</i>
<i>2", 2 1/4", and 2 1/2" Finial options</i> .....	<i>pages 37 to 40</i>
<i>Square Rods and Rings</i> .....	<i>page 41</i>
<i>Square Finial options</i> .....	<i>pages 42 to 44</i>

### *Brackets, Holdbacks, Ceiling Hooks, Bay Windows, and Cornices*

<i>Brackets</i> .....	<i>pages 45 to 52</i>
<i>Holdbacks</i> .....	<i>pages 53 to 60</i>
<i>Ceiling Hooks and Ceiling Brackets</i> .....	<i>page 61</i>
<i>Bay Windows</i> .....	<i>page 62</i>
<i>Cornices</i> .....	<i>page 63</i>

### *Drapery Wands, Swing Arms, Chord Ties, Stair Rod Brackets, Towel Holder*

<i>Drapery Wands</i> .....	<i>page 64</i>
<i>Swing Arms</i> .....	<i>page 64</i>
<i>Chord Ties</i> .....	<i>page 64</i>
<i>Stair Rod Brackets</i> .....	<i>page 64</i>
<i>Towel Holder</i> .....	<i>page 64</i>

### *Additional Information*

<i>Bracket and Holdback Size information</i> .....	<i>page 65</i>
<i>Finial Size information</i> .....	<i>page 66</i>
<i>Rod specifications</i> .....	<i>page 67</i>

**3/8" ROD, RING, and FINIAL options**

*ROD and RING options: (shown at 50% of actual size)*



*FINIAL OPTIONS: (shown at 50% of actual size)*



FINIAL OPTIONS: (shown at 50% of actual size)

F35



F34

**5/8" ROD, RING, and FINIAL options**

**ROD and RING options: (shown at 50% of actual size)**



**FINIAL OPTIONS: (shown at 50% of actual size)**



FINIAL OPTIONS: (shown at 50% of actual size)



FINIAL OPTIONS: (shown at 50% of actual size)

F118



F79



F111



FB112



F10



FB112B



F115



F36



FINIAL OPTIONS: (shown at 50% of actual size)

F102



F75



F32

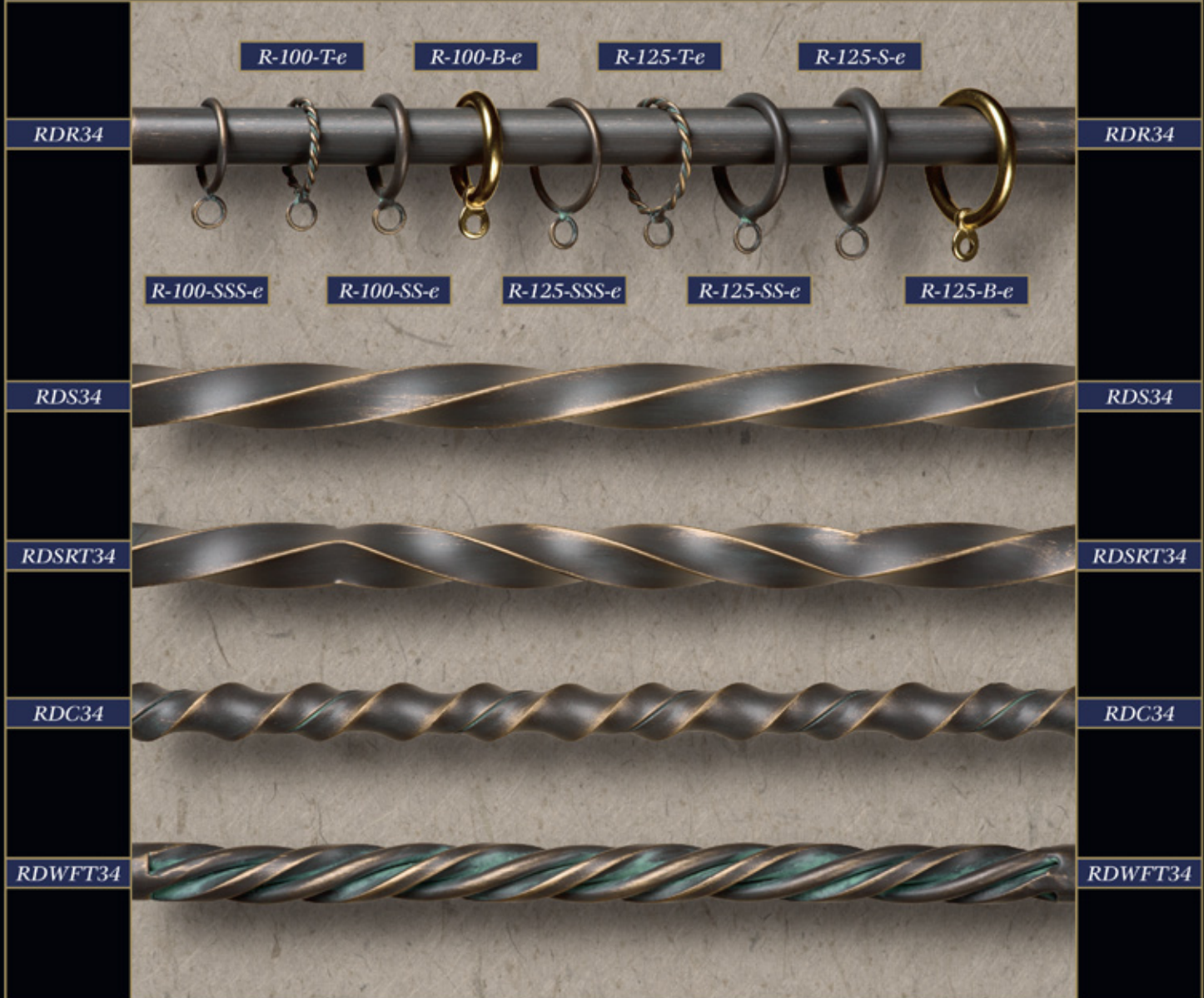


F35



**3/4" ROD, RING, and FINIAL options**

*ROD and RING options: (shown at 50% of actual size)*



*FINIAL OPTIONS: (shown at 50% of actual size)*



FINIAL OPTIONS: (shown at 50% of actual size)



F78

FB2

F2

F6

F10

F4

F79

F1

F75

F121C

F40C

FINIAL OPTIONS: (shown at 50% of actual size)

F11



F201



F202



F204



F107



F130



F206



F203



F205



F102



FINIAL OPTIONS: (shown at 50% of actual size)

F116



F105



F119



F36



F113



F32



FINIAL OPTIONS: (shown at 50% of actual size)

F110



F38



F37



FINIAL OPTIONS: (shown at 50% of actual size)



F108



F35

1" ROD, RING, and FINIAL options

ROD and RING options: (shown at 50% of actual size)

R-125-Te

R-125-S-e

R-150-S-e

R-150-Te

RDR1

RDR1

R-125-SSS-e

R-125-SS-e

R-125-B-e

R-150-B-e

RDS1

RDS1

RDSRT1

RDSRT1

RDC1

RDC1

RDW1

RDW1

RDWDT1

RDWDT1

RDWFT1

RDWFT1

FINIAL OPTIONS: (shown at 50% of actual size)



FINIAL OPTIONS: (shown at 50% of actual size)

F112



F36



F11



F102



F130



F104



FINIAL OPTIONS: (shown at 50% of actual size)

F117



F40D



F114



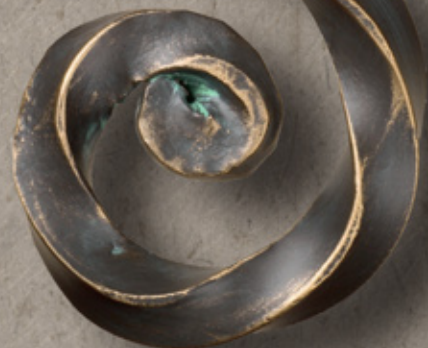
F32



F120



FB2



FINIAL OPTIONS: (shown at 50% of actual size)



F77

F105



F107

F37



FINIAL OPTIONS: (shown at 50% of actual size)

F110



F38



F109



FINIAL OPTIONS: (shown at 50% of actual size)



F75

F131



F101

FINIAL OPTIONS: (shown at 50% of actual size)

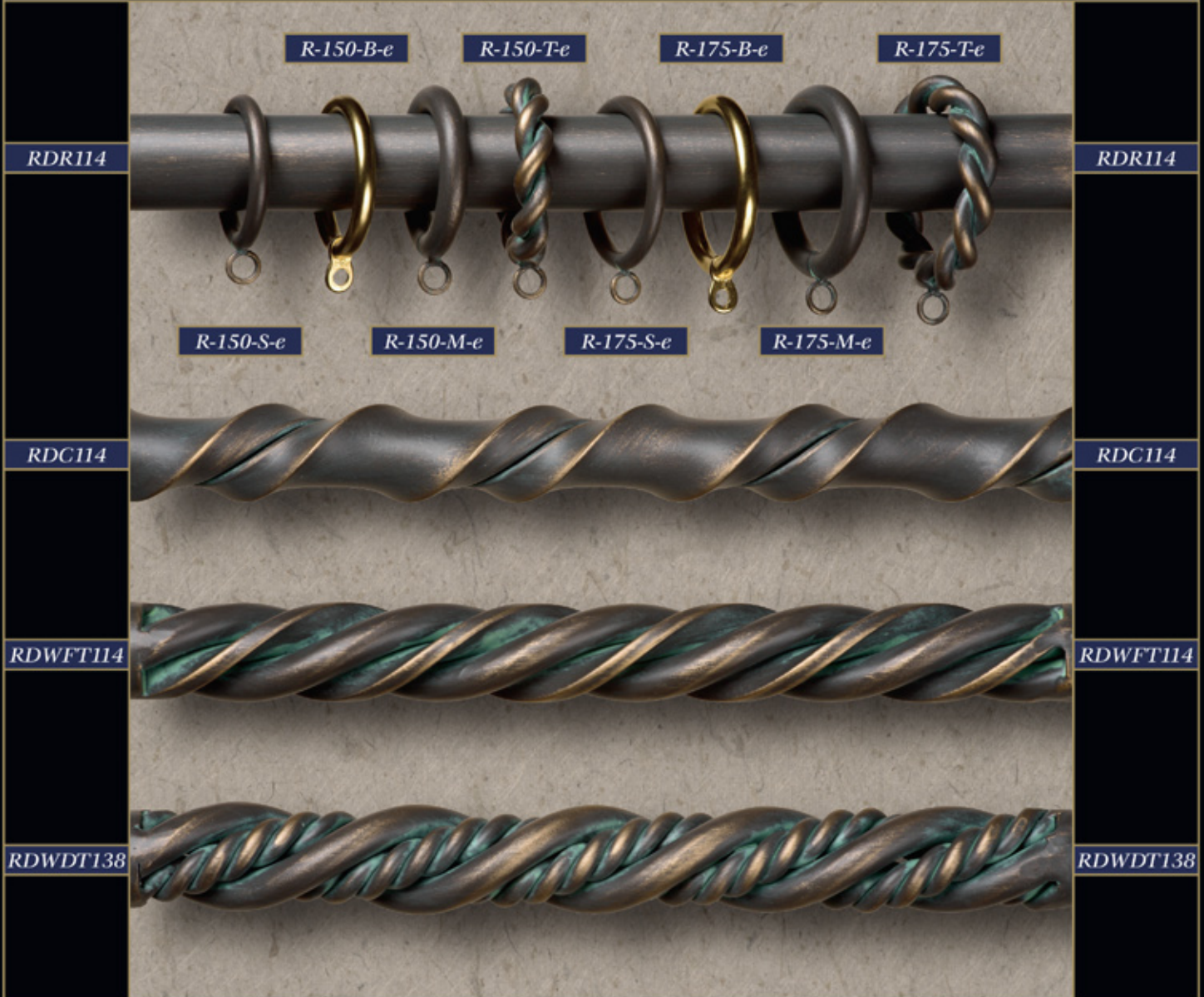


F108

F35

1 1/4" & 1 3/8" ROD, RING, and FINIAL options

ROD and RING options: (shown at 50% of actual size)



FINIAL OPTIONS: (shown at 50% of actual size)



FINIAL OPTIONS: (shown at 50% of actual size)

F104



F12



F11



F17



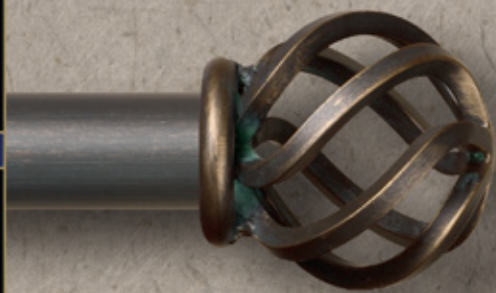
F106



FINIAL OPTIONS: (shown at 50% of actual size)



F210



F32



F208



FB3



F212

FINIAL OPTIONS: (shown at 50% of actual size)

F207



F40E



F209



F14



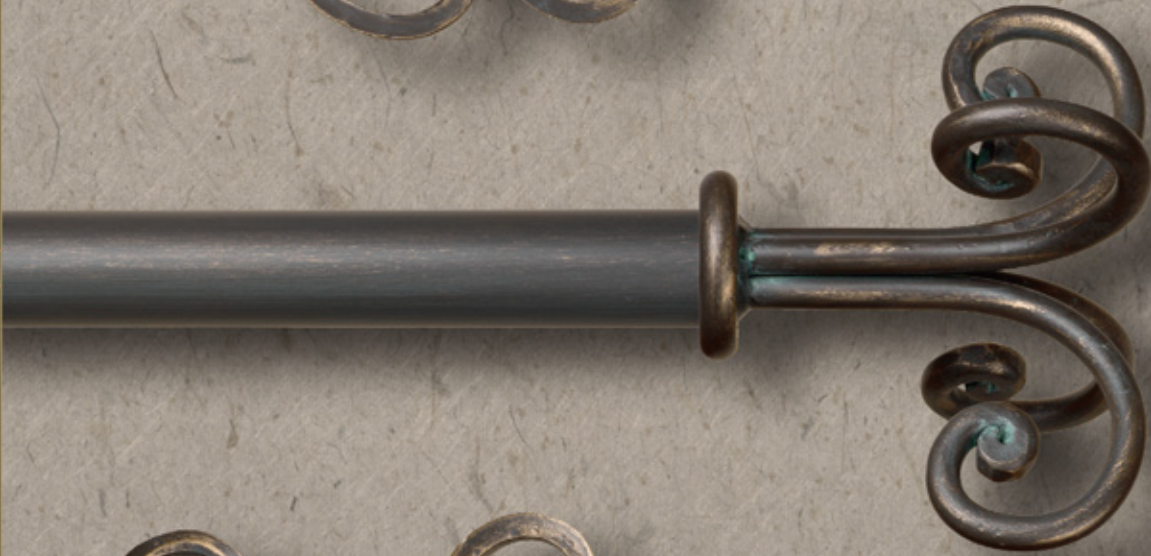
F211



FINIAL OPTIONS: (shown at 50% of actual size)



F37



F105



F101

FINIAL OPTIONS: (shown at 50% of actual size)

F103



F130



F131



F107



FINIAL OPTIONS: (shown at 50% of actual size)



F108



F35

FINIAL OPTIONS: (shown at 50% of actual size)

F110



F38



F109



ROD and RING options: (shown at 50% of actual size)

R-175-B-e      R-175-Te      R-200-B-e      R-200-Te

RDR112

RDR112

R-175-S-e      R-175-M-e      R-200-S-e      R-200-M-e

RDWFT112

RDWFT112

RDW158

RDW158

R-200-B-e      R-200-Te      R-250-M-e

RDR134

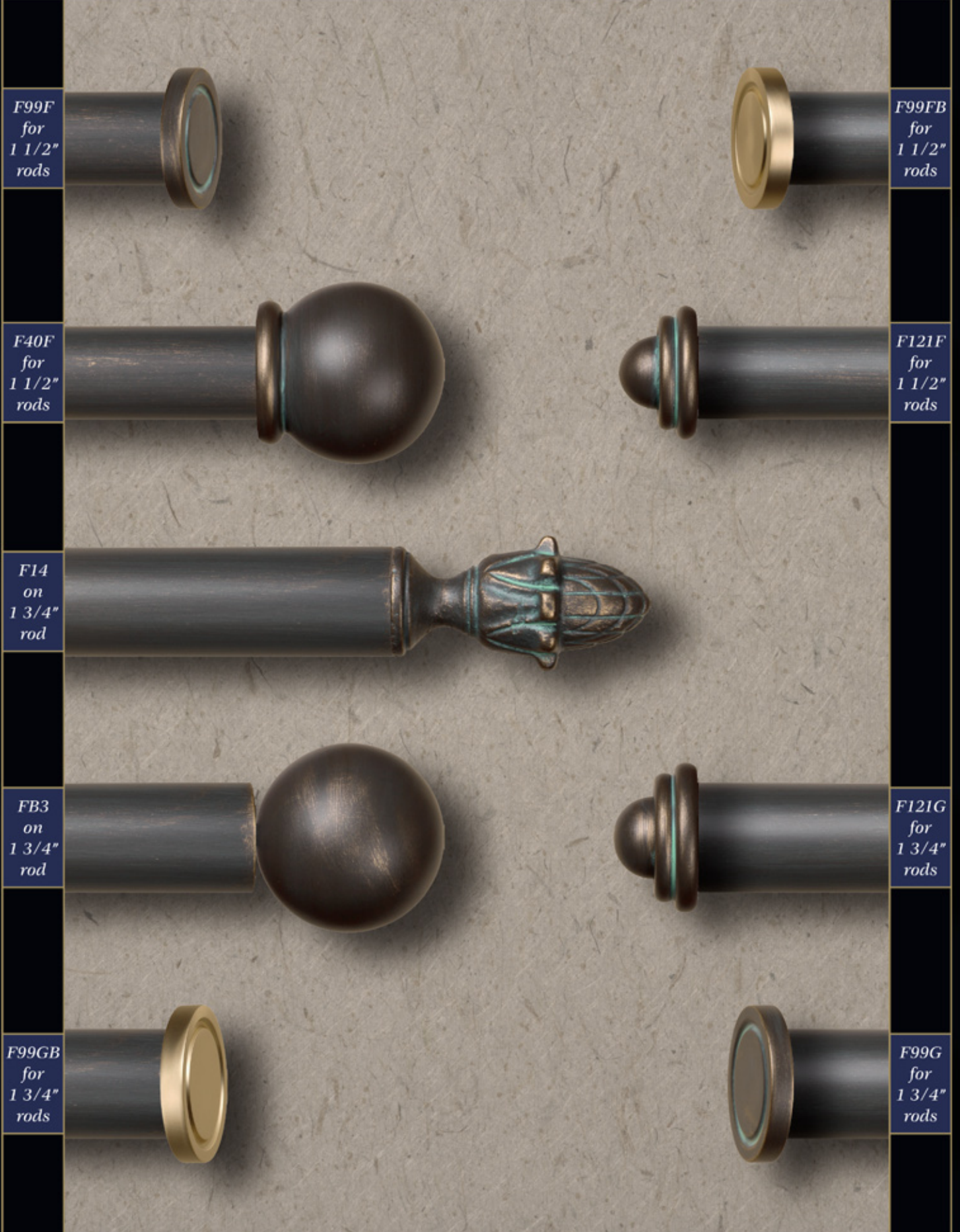
RDR134

R-200-S-e      R-200-M-e      R-250-B-e      R-250-Te

RDC134

RDC134

FINIAL OPTIONS: (shown at 50% of actual size)



F99F  
for  
1 1/2"  
rods

F40F  
for  
1 1/2"  
rods

F14  
on  
1 3/4"  
rod

FB3  
on  
1 3/4"  
rod

F99GB  
for  
1 3/4"  
rods

F99FB  
for  
1 1/2"  
rods

F121F  
for  
1 1/2"  
rods

F121G  
for  
1 3/4"  
rods

F99G  
for  
1 3/4"  
rods

FINIAL OPTIONS: (shown at 50% of actual size)



F15  
on  
1 3/4"  
rod

FB4  
on  
1 3/4"  
rod



F107  
on  
1 1/2"  
rod

F33  
on  
1 3/4"  
rod



FINIAL OPTIONS: (shown at 50% of actual size)

F17  
on  
1 1/2"  
rod



F12  
on  
1 1/2"  
rod



F106  
on  
1 3/4"  
rod



F19  
on  
1 3/4"  
rod



FINIAL OPTIONS: (shown at 50% of actual size)

F110  
on  
1 5/8"  
rod



F103  
on  
1 1/2"  
rod



F101  
on  
1 1/2"  
rod



FINIAL OPTIONS: (shown at 50% of actual size)

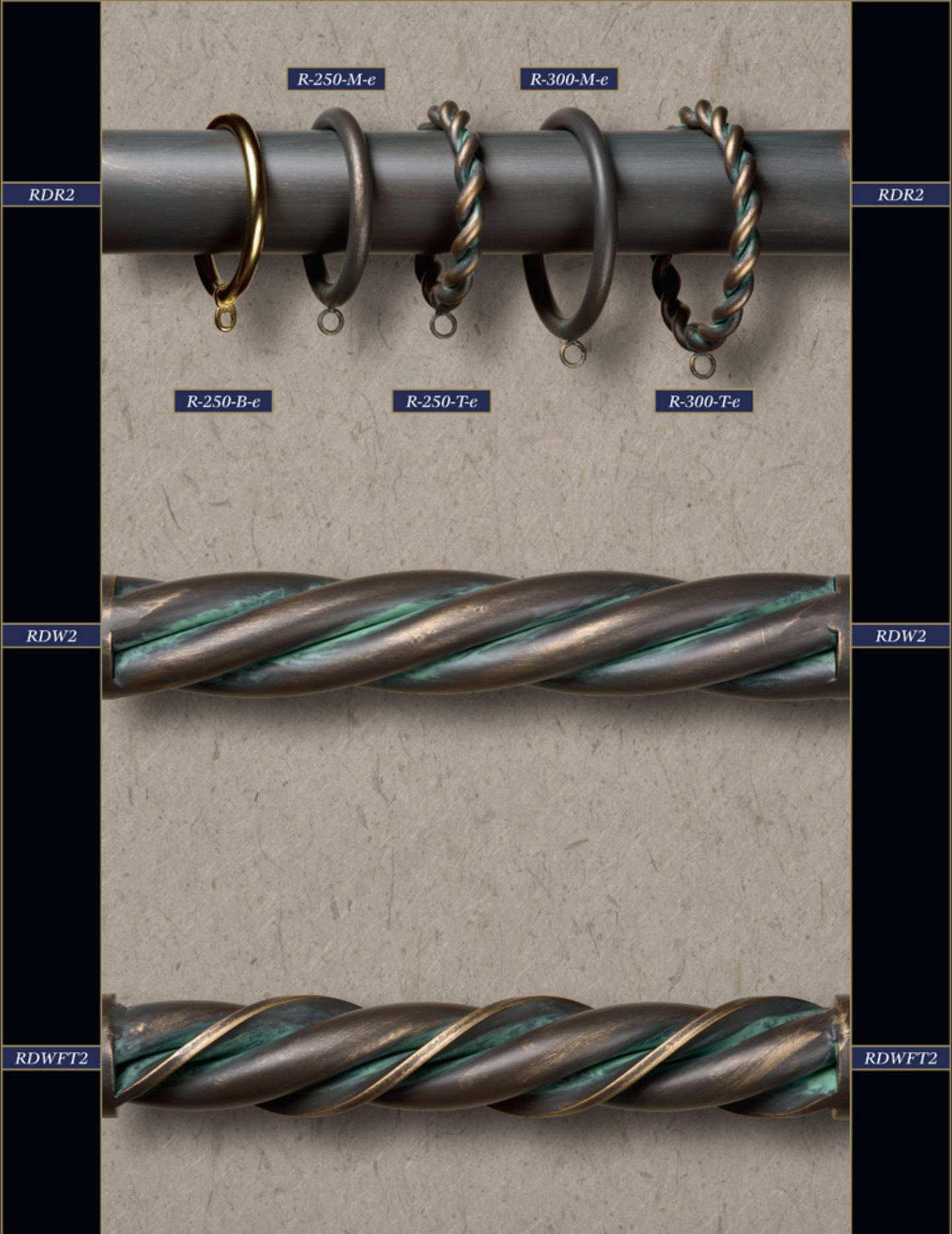
F108  
on  
1 3/4"  
rod



F109  
on  
1 1/2"  
rod



ROD and RING options: (shown at 50% of actual size)



ROD and RING options: (shown at 50% of actual size)



FINIAL OPTIONS: (shown at 50% of actual size)



F217  
on  
2 1/4"  
rod

F99H  
for  
2"  
rods



F216  
on  
2 1/4"  
rod

F99HB  
for  
2"  
rods



F213  
on  
2 1/4"  
rod

FINIAL OPTIONS: (shown at 50% of actual size)

F215  
on  
2 1/4"  
rod



F214  
on  
2 1/4"  
rod



F218  
on  
2 1/4"  
rod



F991B  
for  
2 1/4"  
rods



F991I  
for  
2 1/4"  
rods

FINIAL OPTIONS: (shown at 50% of actual size)

FB4  
on  
2 1/4"  
rod



F12IH  
for  
2"  
rods



F19  
on  
2"  
rod



F16  
on  
2 1/2"  
rod



F12II  
for  
2 1/4"  
rods



F15  
on  
2 1/2"  
rod



FB5  
on  
2 1/2"  
rod

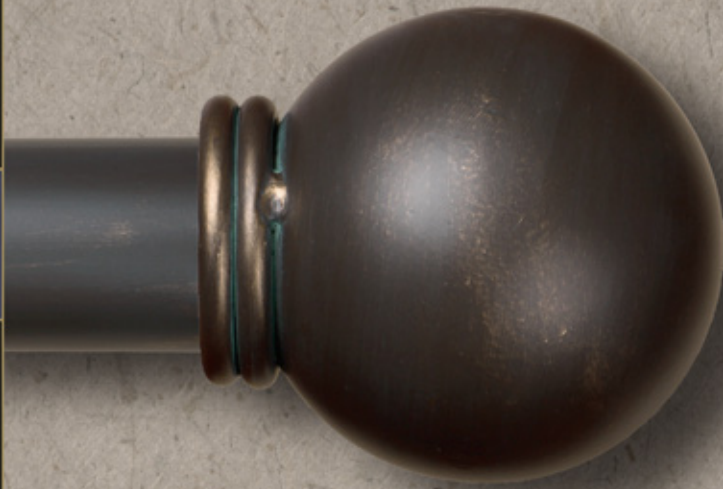


F12IJ  
for  
2 1/2"  
rods



FINIAL OPTIONS: (shown at 50% of actual size)

F44  
on  
2 1/4"  
rod



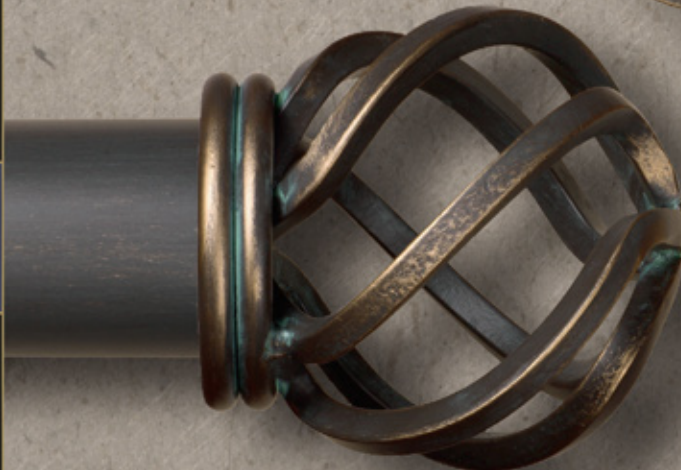
F99J  
for  
2 1/2"  
rods



F108  
on  
2"  
rod



F33  
on  
2 1/2"  
rod



F99JB  
for  
2 1/2"  
rods



ROD and RING options: (shown at 50% of actual size)



FINIAL options for 1/2" SQUARE RODS: (shown at 50% of actual size)



FINIAL options for 5/8" SQUARE RODS: (shown at 50% of actual size)



FINIAL options for 3/4" SQUARE RODS: (shown at 50% of actual size)

F17



F67



F66



F61



F64



F62



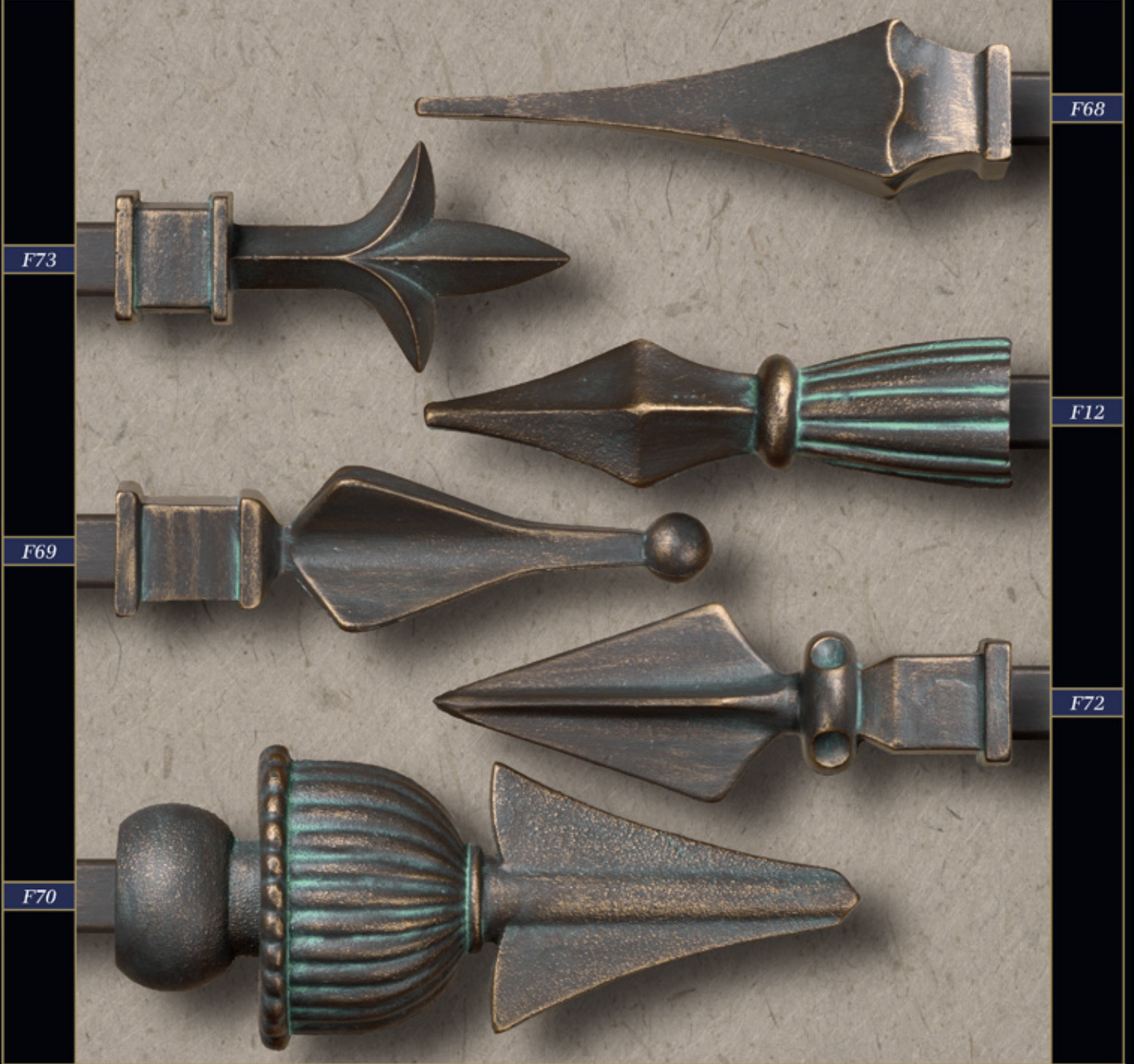
F63



F65



FINIAL options for 1" SQUARE RODS: (shown at 50% of actual size)



FINIAL options for 1 1/4" SQUARE RODS: (shown at 50% of actual size)



**BRACKET options for ROUND RODS**

**BRACKET OPTIONS FOR 3/8" TO 3/4" RODS (shown at 50% of actual size)**



**B52-A**



**B95-A**



**B96-A**



**B54-A**

**BRACKET OPTIONS FOR RODS 5/8" to 2 1/2" (shown at 50% of actual size)**



**B52-B**



**B54-B**



**B51-B**



**B56-B**



**B49-B**



**B50-B**



**B53-B**



**B34-B**

Models represented in this section are for rods 5/8" to 1 1/4" Please refer to page 46 for information on ordering larger versions of these brackets.

B53-D and B34-D size will be 2 1/2" x 9 1/2"

Please refer to page 50 and 65 for more information and other options available for brackets shown on this page.

**BRACKET OPTIONS FOR RODS 5/8" to 2 1/2" (shown at 50% of actual size)**



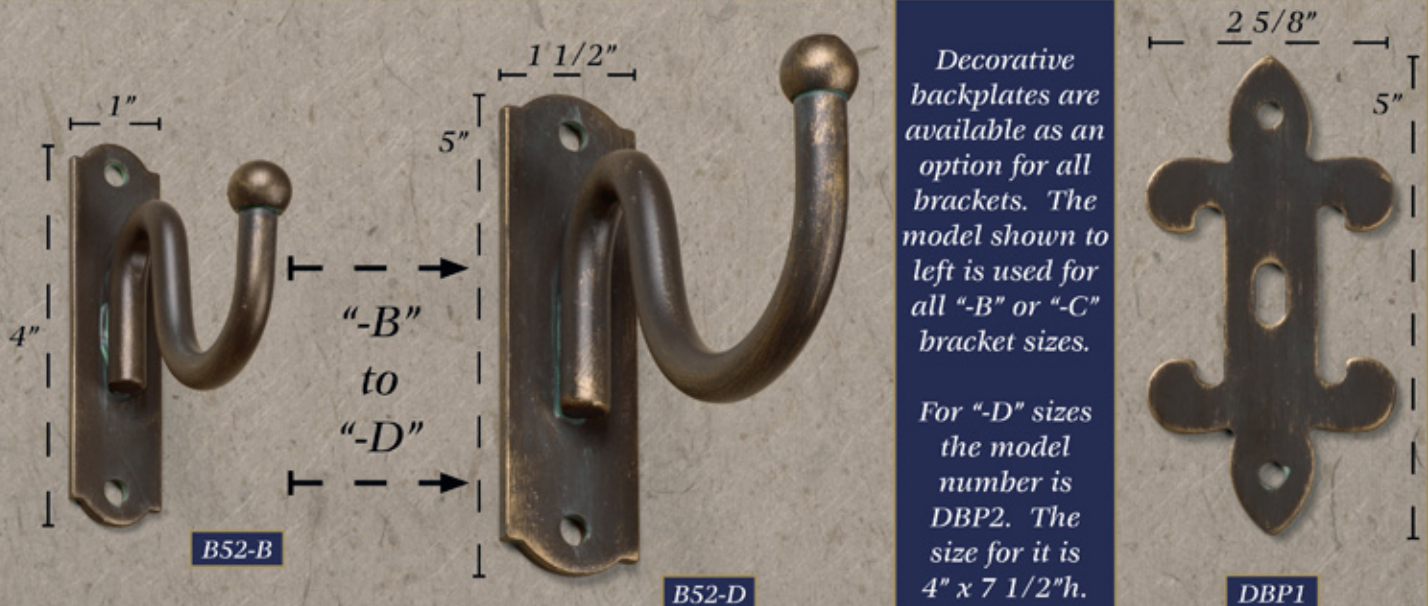
**BRACKET INFORMATION**

*Brackets vary in size based on the size of rod they are accommodating.*

*A bracket with a "-B" designation is best suited for rods 5/8" to 1 1/4"  
The backplate for this size of bracket is 1" wide by 4" in height.*

*For rod sizes of 1 3/8" to 1 5/8" simply change the "-B" to a "-C" when ordering.  
The backplate and any decorative options will remain the same. The only change  
will be in the size of the cup in which the rod is placed. (B52-B becomes B52-C)*

*For rod sizes of 1 3/4" or larger a "-D" should be used to indicate the appropriate bracket  
size. For these brackets the backplate size will increase to 1 1/2" wide by 5" height.  
The size of the support material will also increase in order to support the increased  
rod weight. The example shown below uses round material. Brackets which use  
flat material such as B35-B shown above will also increase proportionately in size.*



*Decorative backplates are available as an option for all brackets. The model shown to left is used for all "-B" or "-C" bracket sizes.*

*For "-D" sizes the model number is DBP2. The size for it is 4" x 7 1/2"h.*

BRACKET OPTIONS FOR 5/8" OR LARGER RODS (shown at 50% of actual size)



B13-B



B12-B



B10-B



B18-B



B19-B



B15-B



B17-B

Please refer to page 50 and 65 for more information and other options available for brackets shown on this page.

Models represented in this section are for rods 5/8" to 1 1/4"  
Please refer to page 46 for information on ordering larger supports for these decorative options.

BRACKET OPTIONS FOR 5/8" OR LARGER RODS (shown at 50% of actual size)



B27-B & B28-B (sold only as a set)



B16-B



B79-B



B24-B



B21-B

Models represented in this section are for rods 5/8" to 1 1/4"  
Please refer to page 46 for information on ordering larger supports for these decorative options.

Please refer to page 50 and 65 for more information and other options available for brackets shown on this page.

BRACKET OPTIONS FOR 5/8" OR LARGER RODS (shown at 50% of actual size)



B22-B



B14-B



B30-B



B25-B



B20-B



B23-B

Models represented in this section are for rods 5/8" to 1 1/4"  
See page 65 for size information. Please refer to page 46 for  
information on ordering larger supports for these options.

SMOOTH AND SHARP ELBOWS WITH REMOVABLE FLANGES (shown at 50% of actual size)

Elbowed returns are an alternative to using brackets and finials at the end of your rods. They are used in conjunction with removable flanges. Removable flanges are the portion which attaches to the wall. The removable flange is composed of the backplate and a short rod welded to the center of the backplate. This rod is inserted into the return and secured using a surface-mounted set screw.



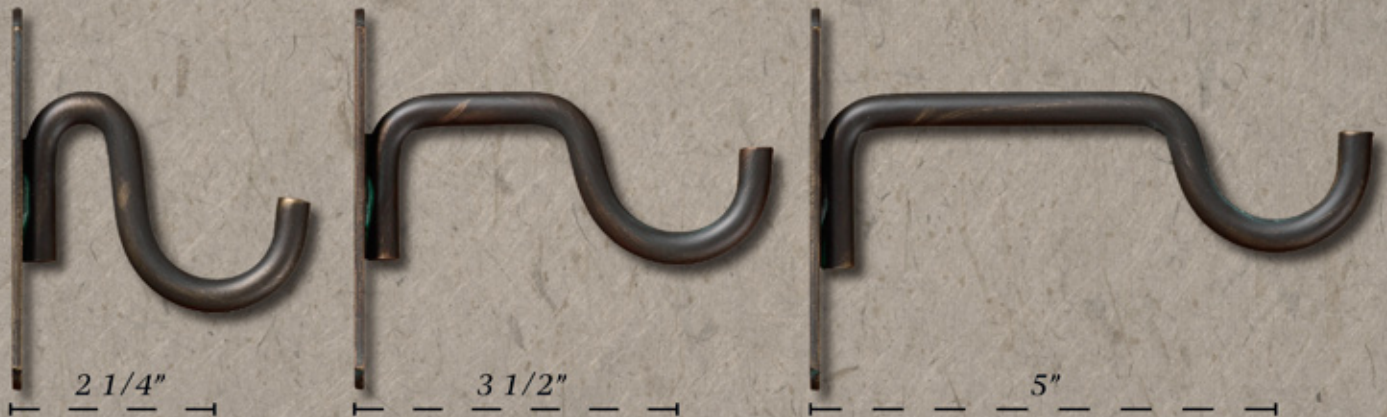
SHARP ELBOW

Smooth and sharp elbowed returns are available for a variety of rod sizes and styles. All returns are created at custom extension lengths of your choice.



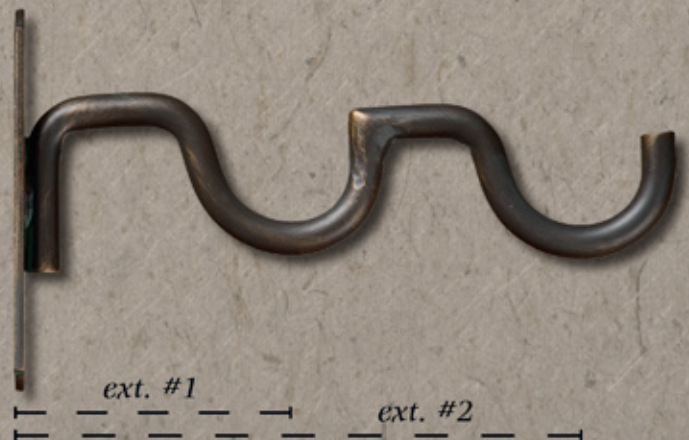
SMOOTH ELBOW

STANDARD EXTENSION LENGTHS (extension is measured from wall to center of cup)



DOUBLE BRACKET EXAMPLE (shown at 50% of actual size)

Double brackets are available for most bracket styles. You must specify desired extension lengths as shown to right. Most rod sizes will require at least 2 1/2" to 3" difference between extension lengths. Sample shown to right has common extension lengths of 3" and 6"



**BRACKET options for ROUND RODS**

**BRACKET OPTIONS FOR 5/8" OR LARGER RODS (shown at 50% of actual size)**

Extension length for this bracket is 3 1/4"  
Custom extension lengths are not available.

Extension lengths are approx.  
2 1/2" for single/first rod  
and 5 3/4" for second rod.  
Extension lengths will vary slightly according to rod size.



**B94**



**B88**



**B88 double**

**BRACKET OPTIONS FOR 1 1/4" OR LARGER RODS (shown at 50% of actual size)**

Models represented on this page change only ring or cup size to accommodate all rod sizes. Bracket material or backplate will not change based on rod size used.



**B91**



**B93**

**BYPASS BRACKETS - AVAILABLE FOR ALL ROD SIZES (shown at 50% of actual size)**



Bypass brackets will allow for a one way draw even if rod lengths or treatment weight dictate that center support is needed. All rings which need to bypass these brackets must be ordered "spliced." A "spliced" ring has a portion removed at the exact location of the bracket support arm.

Bypass brackets should be considered only if moving up to a larger rod size is not an option. Your customer should be informed that care will need to be taken when moving rings across bypass brackets. Bypass brackets work only with smooth round rods.

Example shown to left uses RDR114 with spliced ring R-175-S-e

**INSIDE MOUNT BRACKETS FOR 3/8" to 1 1/4" RODS (shown at 50% of actual size)**



**B70-38**

**B70-58**

**B70-34**

**B70-1**

**B70-114**

**SQUARE BRACKET OPTIONS FOR ALL SQUARE ROD SIZES (shown at 50% of actual size)**



**B59**

**B60**

**B61**

**B63**

HOLDBACK OPTIONS (shown at 50% of actual size)



T56



T80

STANDARD EXTENSION FOR ALL HOLDBACKS IS 4" FROM WALL - THIS CAN BE CUSTOMIZED

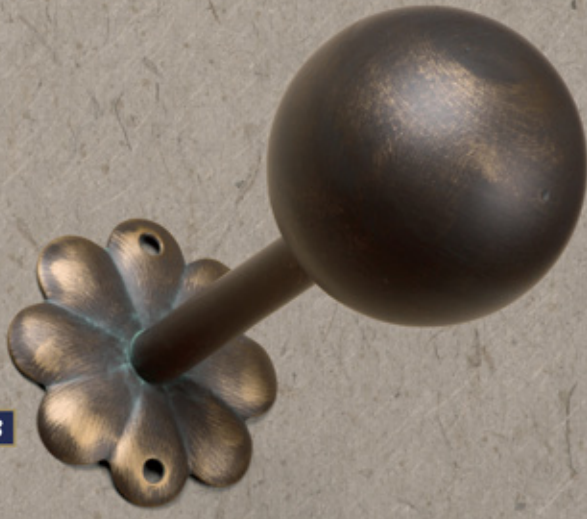


T51

See page 65 for dimensions of the decorative ornaments used for all holdback models.

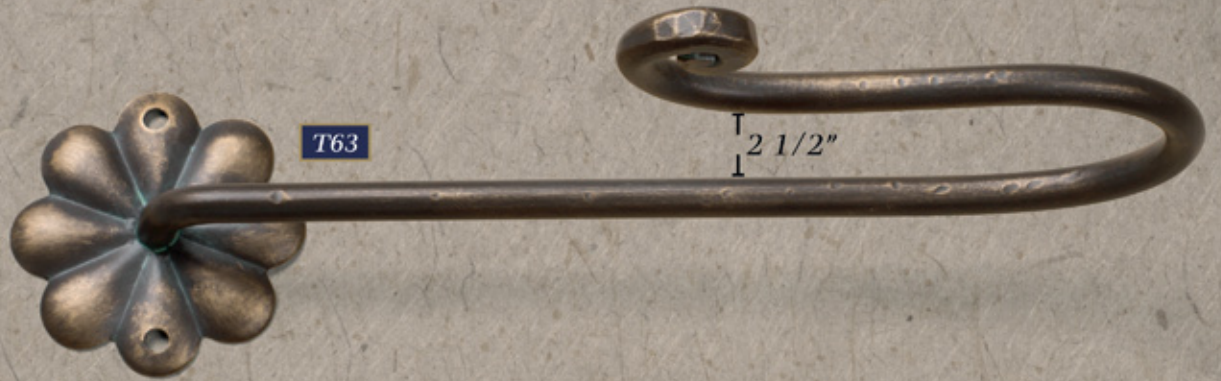


T32



T33

HOLDBACK OPTIONS (shown at 50% of actual size)



See page 65 for dimensions of the decorative ornaments used for all holdback models.

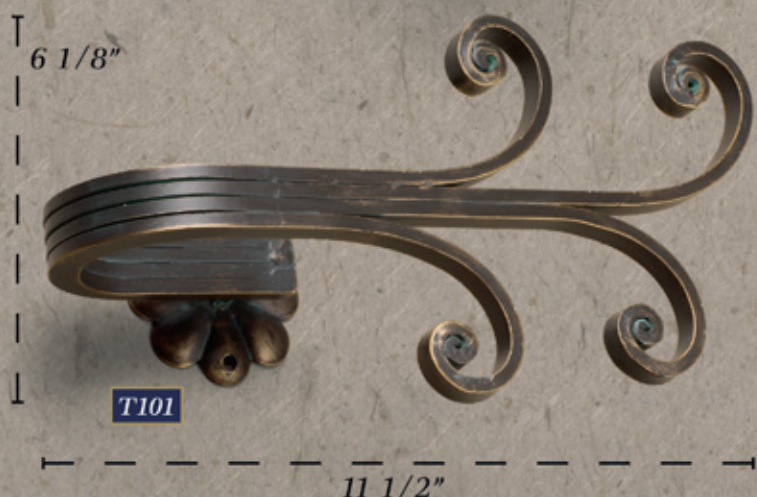
STANDARD EXTENSION FOR ALL HOLDBACKS IS 4" FROM WALL - THIS CAN BE CUSTOMIZED



HOLDBACK OPTIONS (shown at 33% of actual size)



STANDARD EXTENSION  
FOR ALL HOLDBACKS  
IS 4" FROM WALL - THIS  
CAN BE CUSTOMIZED



HOLDBACK OPTIONS (shown at 33% of actual size)



21"



T60



13"



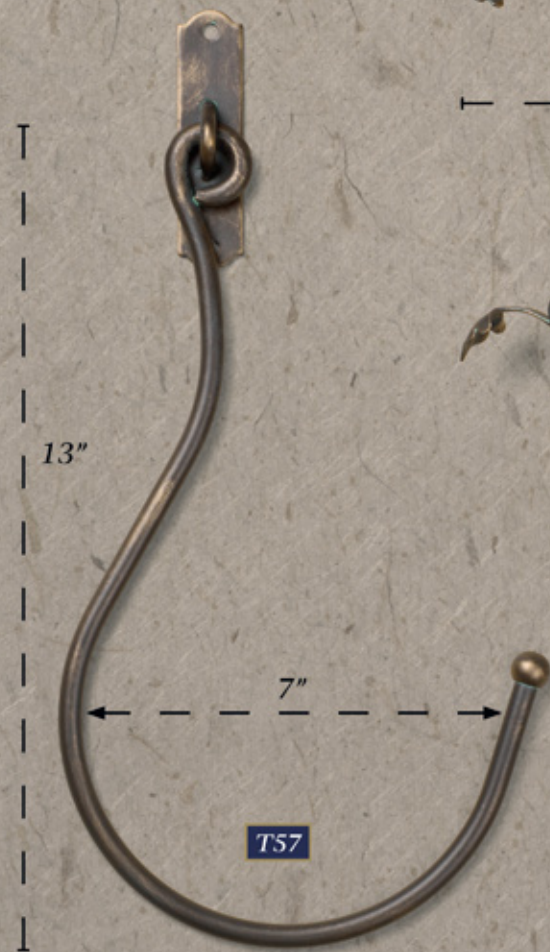
T61



10"



T62

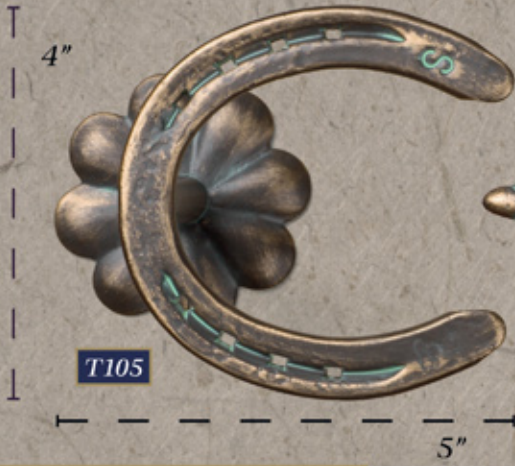


13"

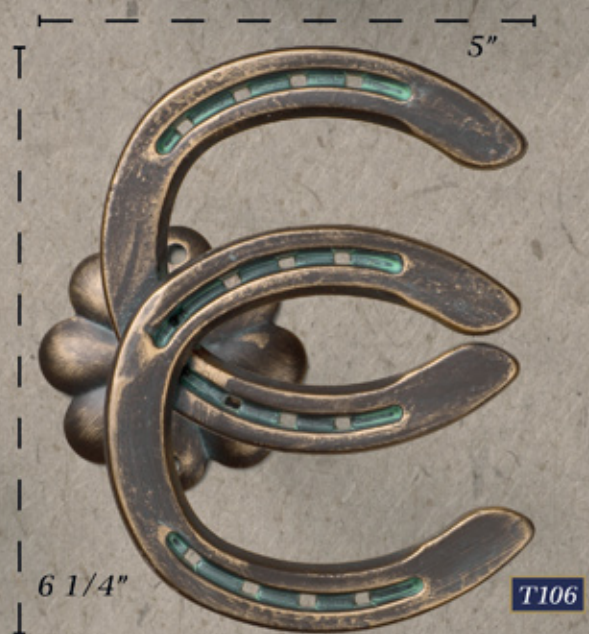
7"

T57

HOLDBACK OPTIONS (shown at 50% of actual size)



See page 65 for dimensions of the decorative ornaments used for all holdback models.



STANDARD EXTENSION FOR ALL HOLDBACKS IS 4" FROM WALL - THIS CAN BE CUSTOMIZED

HOLDBACK OPTIONS (shown at 50% of actual size)



T16



T14



T30



T22

See page 65 for dimensions of the decorative ornaments used for all holdback models.



T65



T10



T12

HOLDBACK OPTIONS (shown at 50% of actual size)



T79



T18

See page 65 for dimensions of the decorative ornaments used for all holdback models.



T24



T15



T55



T20



T17

STANDARD EXTENSION FOR ALL HOLDBACKS IS 4" FROM WALL - THIS CAN BE CUSTOMIZED

HOLDBACK OPTIONS (shown at 50% of actual size)



T66

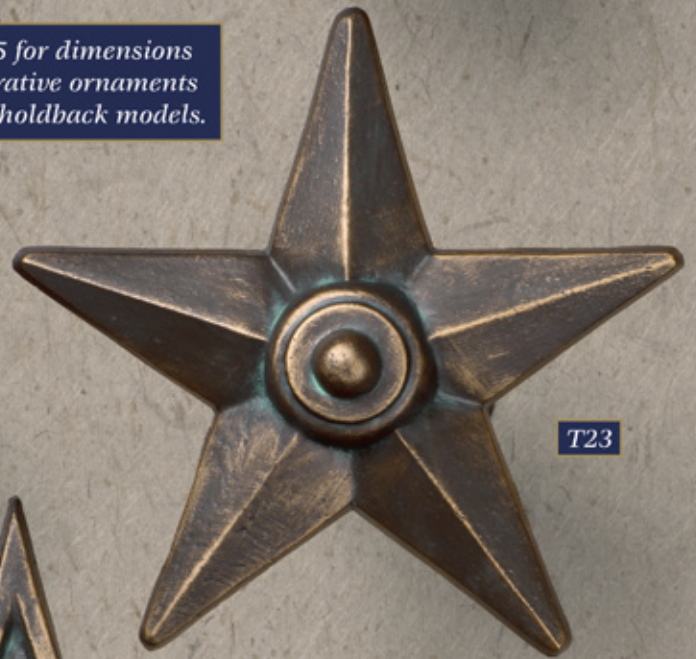


T31

See page 65 for dimensions of the decorative ornaments used for all holdback models.



T68



T23



T25



T81



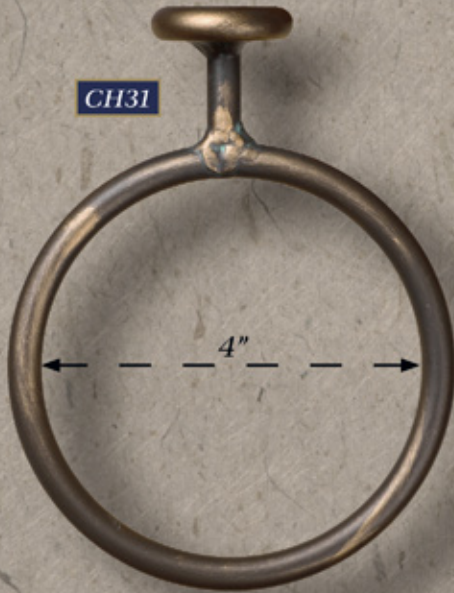
T19

CEILING HOOKS (shown at 50% of actual size)



7"

6"



4"

4"

CEILING BRACKETS (standard drop length from ceiling is 2 3/4" - this can be customized)



"drop length"  
(to bottom of rod)



BC52

2"

2"

## ANGLED BAY WINDOWS



## ANGLED BAY WINDOWS - ADJUSTABLE ELBOWS

*Adjustable elbows are useful for bay windows in which the exact angle is not known or easily measured. They can be ordered for all rod sizes and styles up to 2" in diameter.*

*The measurements which we require are illustrated below. Approximate corner angle is needed for ensuring rod lengths will extend accurately from the corners.*

*"A" = wall "corner to corner"*

*"B" = rod length from corner to end of rod (not including finial)*



## ANGLED BAY WINDOWS - FIXED SHARP OR SMOOTH ELBOWS

*SHARP ELBOWS - Rods are cut and welded together at specific angles*

*SMOOTH ELBOWS - Rods are bent at specific angles to form smooth angles*

*These options require a full-size template.*

*For smooth elbows please draw the amount of curve desired on the template.*

## CURVED OR ARCHED BAY WINDOWS

*A full-size template is required for all curved or arched windows.*

*Please include on the template:*

- \* *Mark location of rod ends (before finials)*
- \* *Distance from wall to center of rod*
- \* *Desired bracket locations*
- \* *For arched rods, mark location of welded rings or pegs*

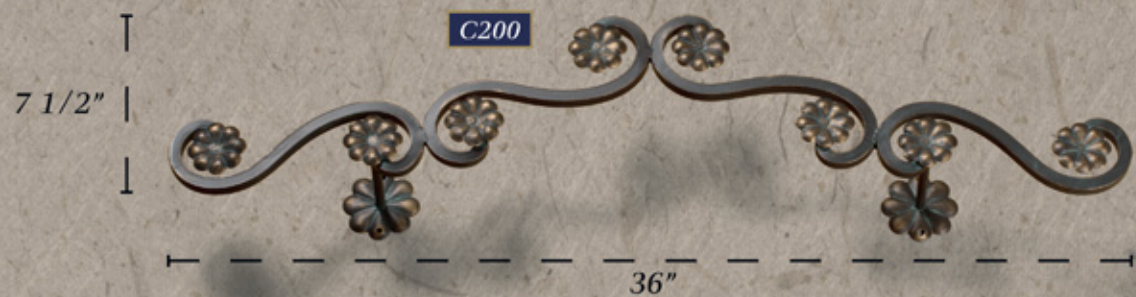
*Please specify if curved rod is installed:*

- \* *Above a curved bay window*
- \* *Over an arched window*
- \* *Set inside an arched window*

*Other information that may be relevant:*

- \* *Trim or moulding locations & thickness*
- \* *Window locations*

CORNICES



DRAPERY WANDS, CORD TIES, STAIR ROD BRACKETS, TOWEL HOLDER, SWING ARMS

TOWEL HOLDER



BH200



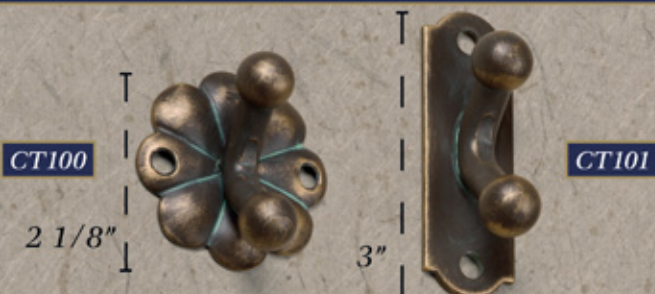
**DW30:**  
This drapery wand attaches directly to ring eyelet using the provided end clip. Wand diameter is 3/8" and uses a 5/8" ball finial at the end.

**DW40:**  
This drapery wand replaces one of the sewn rings on the treatment and is customized to match the other rings used for the drapery rod. Wand diameter is 5/8" and uses a 1" ball finial at the end. Any 5/8" rod style can be used for this wand.

All drapery wands can be customized with the finial of our choice. Default wand length for both options is 36" overall. This length can be customized.

Estimates for any customizations will be faxed back to you.

CHORD TIES



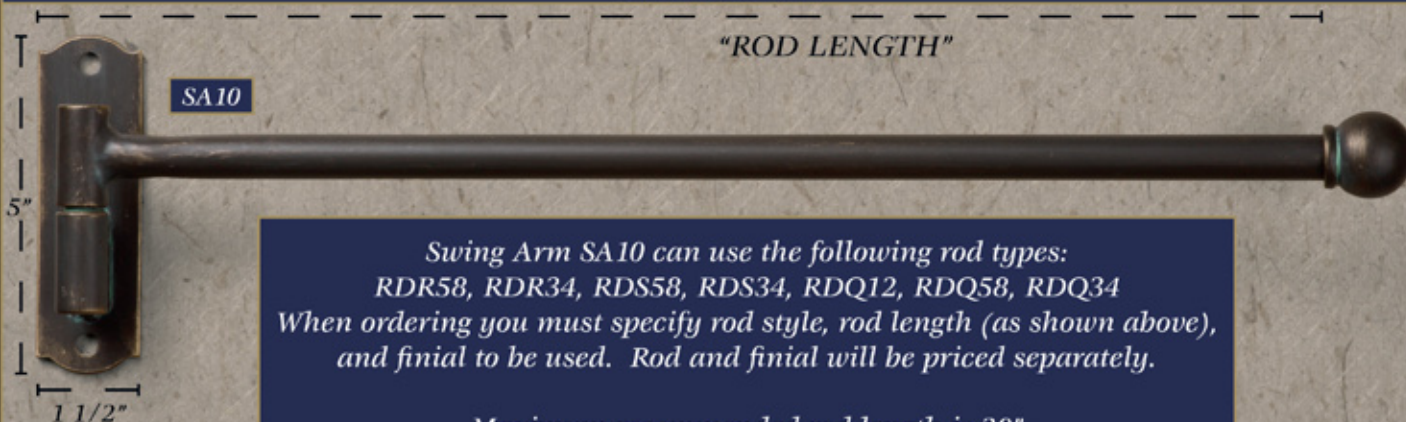
STAIR ROD BRACKETS

Stair Rod Brackets are for use with 5/8" or 3/4" round or twisted rods styles.

Optional spacer is used when needed to allow room for larger finial diameters.



SWING ARMS



Swing Arm SA10 can use the following rod types:  
RDR58, RDR34, RDS58, RDS34, RDQ12, RDQ58, RDQ34  
When ordering you must specify rod style, rod length (as shown above), and finial to be used. Rod and finial will be priced separately.

Maximum recommended rod length is 30"

Please visit our website for additional Swing Arm options.

**BRACKET SIZE INFORMATION**

Item#	Width	Height		Item#	Width	Height	
B10	3 1/4"	3 1/4"		B25	8"	7 3/4"	<p><i>Bracket Notes:</i></p> <p><i>The sizes listed within this chart are for the decorative ornaments only. These sizes do not reflect overall bracket size or backplate dimensions.</i></p> <p><i>Standard extension lengths: 2 1/4", 3 1/2", and 5"</i></p> <p><i>Custom extensions and backplates are available.</i></p> <p><i>Please see pages 46 and 50 for more information.</i></p>
B12	2 7/8"	2 7/8"		B27	7"	7 7/8"	
B13	4"	4"		B28	8 1/2"	5 1/8"	
B14	4 3/8"	4 1/4"		B30	2 7/8"	2 7/8"	
B15	4 3/4"	6"		B32	2 1/8"	2 1/8"	
B16	2 1/2"	6 1/2"		B51	2 1/2"	2 1/2"	
B17	3 7/8"	3 7/8"		B56	3 1/2"	3 1/2"	
B18	6 3/8"	6 3/8"		B61	2 1/2"	2 1/2"	
B19	4"	4"		B70-38	11/16"	1 3/16"	
B20	8 5/8"	8 1/4"		B70-58	15/16"	1 1/4"	
B21	3 1/8"	6 3/8"		B70-34	1"	1 3/8"	
B22	4"	7 1/8"		B70-1	1 1/4"	1 3/4"	
B23	7"	6 3/4"		B70-114	1 1/2"	2 1/8"	
B24	5 1/2"	4 1/4"		B79	3 1/4"	3 1/4"	

**CUSTOM BRACKETS AND HOLDBACKS**

*If our standard brackets or holdbacks do not fit your needs, please fax us a sketch or photograph of what you are looking for. Whether you need a modification to one of our existing products or want a creation completely of your own design - we can help.*

*An estimate for your custom design will be faxed back to you within 24 hours.*

**HOLDBACK SIZE INFORMATION**

Item#	Width	Height		Item#	Width	Height	
T10	3 1/4"	3 1/4"		T31	4 1/2"	4 1/2"	
T12	2 7/8"	2 7/8"		T32	3"	3"	
T14	4 3/8"	4 1/4"		T33	3"	3"	
T15	4 3/4"	6"		T51	2 1/4"	2 1/4"	
T16	6 1/2"	2 1/2"		T55	4"	4"	
T17	3 7/8"	3 7/8"		T56	3 1/2"	3 1/2"	
T18	6 3/8"	6 3/8"		T65	7 1/2"	9"	
T19	3 7/8"	4"		T66	4 1/2"	4 1/2"	
T20	8 5/8"	8 1/4"		T67	9 1/4"	3 3/4"	
T21	6 3/8"	3 1/8"		T68	5 5/8"	5 5/8"	
T22	7 1/8"	4"		T69	6 1/2"	6 1/2"	
T23	7"	6 3/4"		T79	3 1/4"	3 1/4"	
T24	4 1/4"	5 1/2"		T80	3 1/2"	3 1/2"	
T25	8"	7 3/4"		T81	3 5/8"	4 1/8"	
T30	4 3/8"	5 1/2"		T103	5 3/4"	5 3/4"	

### FINIAL SIZE INFORMATION

Item#	Width	Height		Item#	Width	Height		Item#	Width	Height
FB58	1/2"	5/8"		F58	4 7/8"	3"		F121D	7/8"	1 1/2"
FB1	1"	1"		F59	4 5/8"	2 3/8"		F121E	1"	1 7/8"
FB112	1 1/2"	1 1/2"		F60	5 3/8"	3 1/8"		F121F	1 3/16"	2 1/8"
FB2	2"	2"		F61	7"	3 7/8"		F121G	1 3/8"	2 3/8"
FB3	3"	3"		F62	6 3/4"	3 1/2"		F121H	1 1/2"	2 5/8"
FB4	4"	4"		F63	7 1/8"	4 1/4"		F121I	1 5/8"	2 7/8"
FB5	5"	5"		F64	6"	1 7/8"		F121J	1 3/4"	3 1/4"
F1	5 1/8"	2 3/8"		F65	6 1/4"	4"		F130	2"	9"
F2	4"	1 3/4"		F66	5"	1 7/8"		F131	6"	10 1/4"
F3	4 3/8"	1 7/8"		F67	5 7/8"	3 5/8"		F201	4 1/4"	2"
F4	6 1/8"	2 3/4"		F68	8"	2 1/8"		F202	3 3/4"	1 3/4"
F6	3 7/8"	1 1/2"		F69	8"	2 1/8"		F203	4 3/8"	1 7/8"
F7	4 3/4"	2 1/2"		F70	10"	4 1/8"		F204	4 7/8"	1 5/8"
F10	4 5/8"	2 5/8"		F71	6"	2 1/8"		F205	4 3/8"	1 1/2"
F11	5 1/2"	3 3/4"		F72	7 3/4"	2 5/8"		F206	4 1/2"	2 1/8"
F12	7 7/8"	2"		F73	6 1/8"	3 1/8"		F207	7"	3"
F14	4 1/8"	2"		F74	8 5/8"	2 7/8"		F208	5 3/8"	2 1/2"
F15	6 1/8"	3 3/4"		F75	8 1/4"	5 1/8"		F209	6 3/4"	2 3/4"
F16	8"	4"		F76	8 1/4"	5 1/8"		F210	7 3/4"	2 3/8"
F17	6 5/8"	3 3/4"		F77	5 7/8"	4 1/4"		F211	6 7/8"	2 1/2"
F19	7 1/2"	3 1/2"		F78	5 3/4"	4 1/4"		F212	7 1/4"	3 3/8"
F21	1 1/2"	1 3/8"		F79	2 3/4"	3"		F213	9 1/4"	4 1/2"
F22	1 1/2"	7/8"		F101	9 1/4"	6"		F214	9"	4"
F23	3"	1/2"		F102	5 1/4"	2 1/2"		F215	9"	4 5/8"
F24	2 7/8"	5/8"		F103	6 3/4"	5 3/8"		F216	9"	3 1/2"
F30	4 1/2"	2"		F104	6 1/4"	3"		F217	8 3/4"	4"
F31	4 1/2"	2"		F105	4 3/4"	6 7/8"		F218	9 1/4"	5 1/8"
F32	3 1/8"	3 1/8"		F106	8 1/8"	3 3/4"		F40A	7/8"	3/4"
F33	5 1/8"	5"		F107	5 1/2"	6 5/8"		F40B	1 1/4"	1 1/4"
F34	11 1/4"	9 1/2"		F108	9 5/8"	10"		F40C	1 1/2"	1 1/2"
F35	11 1/4"	9 1/2"		F109	8"	8 3/8"		F40D	2 1/8"	2"
F36	5 1/4"	4"		F110	8 1/4"	6"		F40E	2 5/8"	2 1/2"
F37	7 1/8"	7 1/4"		F111	5"	4 1/8"		F40F	3"	3"
F38	7 1/4"	9 7/8"		F112	4 1/2"	4 1/4"		F99A	3/8"	5/8"
F44	5 1/2"	5"		F113	7"	5 3/8"		F99B	3/8"	1 1/8"
F45	6"	3 1/4"		F114	5 5/8"	5 5/8"		F99C	3/8"	1 1/4"
F46	6"	3"		F115	5"	4 1/4"		F99D	3/8"	1 3/4"
F50	5 1/4"	3 3/8"		F116	5 5/8"	5 1/2"		F99E	3/8"	2"
F51	4 3/8"	2 1/8"		F117	7"	6"		F99F	3/8"	2 1/4"
F52	4 1/8"	1"		F118	5"	4 5/8"		F99G	3/8"	2 1/2"
F53	7 1/4"	2 7/8"		F119	6 3/8"	5 1/2"		F99H	1/2"	2 3/4"
F54	5"	3 1/8"		F120	6 5/8"	5 3/4"		F99I	1/2"	3"
F55	6 3/8"	3 3/8"		F121A	1/2"	7/8"		F99J	1/2"	3 1/4"
F56	5 1/2"	3"		F121B	5/8"	1 1/8"				
F57	6"	3 1/2"		F121C	3/4"	1 1/4"				

*\*When ordering finials F11, F130, and F131 please note your usable rod length will decrease due to finial overlap. The amount of rod overlap for F11 is 2 1/2", for F130 - 1 1/2", and F131 4 1/2" Please factor this in when determining overall rod length for your order. For example, for F11 you would need to add 5" to your rod length when using this finial on both ends. (2 1/2" x 2)*

**ROD INFORMATION**

Rod	Outside	Weight	Max Length	Max Support
Model#	Diameter	(per foot)	between sup.	Weight
RDC34	3/4"	.625 lb/ft	3'	4 lb
RDC1	1"	1.13 lb/ft	4'	5 lb
RDC114	1 1/4"	1.44 lb/ft	5'	8 lb
RDC134	1 3/4"	2.00 lb/ft	6'	12 lb
RDQ12	1/2"	.438 lb/ft	5'	3 lb
RDQ58	5/8"	.469 lb/ft	5'	8 lb
RDQ34	3/4"	.563 lb/ft	6'	8 lb
RDQ1	1"	.719 lb/ft	7'	12 lb
RDQ114	1 1/4"	1.31 lb/ft	9'	14 lb
RDR38	3/8"	.375 lb/ft	3'	5 lb
RDR58	5/8"	.563 lb/ft	5'	8 lb
RDR34	3/4"	.500 lb/ft	5'	3 lb
RDR1	1"	.750 lb/ft	7'	6 lb
RDR114	1 1/4"	1.00 lb/ft	8'	7 lb
RDR112	1 1/2"	1.25 lb/ft	9'	18 lb
RDR158	1 5/8"	2.25 lb/ft	9'	30 lb
RDR134	1 3/4"	1.50 lb/ft	10'	25 lb
RDR2	2"	1.75 lb/ft	12'	17 lb
RDR214	2 1/4"	2.00 lb/ft	12'	27 lb
RDR212	2 1/2"	3.00 lb/ft	12'	35 lb
RDS58	5/8"	.813 lb/ft	5'	3 lb
RDS34	3/4"	1.31 lb/ft	6'	5 lb
RDS1	1"	1.81 lb/ft	7'	6 lb
RDSRT58	5/8"	.813 lb/ft	5'	3 lb
RDSRT34	3/4"	1.31 lb/ft	6'	5 lb
RDSRT1	1"	1.81 lb/ft	7'	6 lb
RDW58	5/8"	.719 lb/ft	4'	2 lb
RDW1	1"	1.63 lb/ft	4'	6 lb
RDW158	1 5/8"	2.31 lb/ft	7'	9 lb
RDW2	2"	4.00 lb/ft	8'	16 lb
RDWDT1	1"	1.63 lb/ft	4'	5 lb
RDWDT138	1 3/8"	2.88 lb/ft	5'	4 lb
RDWFT34	3/4"	1.06 lb/ft	4'	4 lb
RDWFT1	1"	1.75 lb/ft	4'	7 lb
RDWFT114	1 1/4"	2.63 lb/ft	5'	7 lb
RDWFT112	1 1/2"	2.50 lb/ft	7'	5 lb
RDWFT2	2"	3.50 lb/ft	7'	15 lb
RDWFT212	2 1/2"	5.50 lb/ft	8'	30 lb

**Notes:**

*The column "Max Length Between Supports" lists the maximum distance you can span between support brackets for each given rod style. Please see the column "Max Support Weight" to determine how much weight can be carried at this length.*

*The column "Max Support Weight" is the maximum weight you can apply to the rod between support brackets when pushing the distance close to the values listed in the column "Max Length between Supports." These values are approximate and should not be pushed to the absolute extreme. The Max Support Weight will increase substantially if the distance between supports is decreased from the maximum lengths listed in the chart.*

*Treatment weight can vary substantially based on the fabrics and linings used. As a rule of thumb, a medium weight treatment will typically run approximately 1 pound per linear foot. (including rings, based on an 8' length)*

*All information on this page is approximate and provided for ordering convenience only. A qualified installer should always make the final determination of bracket distance and placement.*

*Mounting brackets should be secured into solid wood studs.*

